



Copilot+PC

AMD

The product images are for illustration purposes only. Actual product appearance, ports, keyboard layout, and accessories may vary by model.

- AMD Ryzen AI 5 330 (4C / 8T, 2.0 / 4.5GHz, 4MB L2 / 8MB L3)
- 1x 16GB SODIMM DDR5-5600
- 512GB SSD M.2 2280 PCIe 4.0x4 NVMe Opal 2.0
- Integrated AMD Radeon 820M Graphics
- Windows 11 Pro, WE (EN/FR/DE/NL/IT)
- Case color - Black
- 1Y Onsite from 1Y Depot WHB (CPN)

**Premier Support** - A direct 24x7x365 line to our most elite technicians.

- Advanced technical support, 24x7x365, in more than 100 markets
- Comprehensive hardware & OEM software support
- Single point of contact for simplified end-to-end case management
- Technical Account Managers for proactive relationship and escalation management
- Priority on service delivery and repair parts
- Lenovo Service Connect Portal for customized reporting and product support

**Accidental Damage Protection** - Protection of your PC from the unexpected.

Experience shows that a significant portion of devices may be damaged (and not covered under warranty) in the first three years. Lenovo's Accidental Damage Protection service covers accidents beyond the system warranty such as drops, spills, bumps and even electrical surges. Make sure your new device has maximum protection, avoid unplanned costs and get peace of mind.

**Base Warranty** - Included with the systems you purchase, default 1- or 3-year coverage window.

**Warranty Extensions & Upgrades** - Service and protection that's right for your circumstances.

- Pick Up & Return Courier
- Onsite Support
- Technician Installed Customer
- Replaceable Unit Service
- International Warranty Upgrade

**Recommended Accessories** Italy



**Lenovo Dual-Mode Wireless ANC Headset 6550 (USB-C, Teams)**  
4XD1S19778



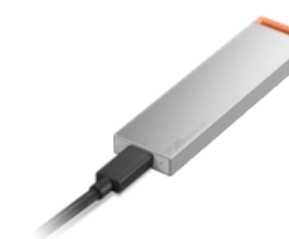
**Lenovo Professional Wireless Rechargeable Combo Keyboard and Mouse-Italy**  
4X31R64334



**Lenovo USB 20Gbps USB-C to USB-C Cable 1.5m**  
4X91U92143



**ThinkCentre Tiny COM Expansion Card with BTB Connector II**  
4XH1U89936



**Lenovo PS8S Portable SSD 4TB**  
4XBIT91892



**Lenovo 310 FHD Webcam Black**  
GXC1S15024

>> [View More Accessories](#)

**PERFORMANCE****Processor**

AMD Ryzen™ AI 5 330 (4C / 8T, 2.0 / 4.5GHz, 4MB L2 / 8MB L3)

**AI PC Category**

Copilot+ PC

**NPU**

Integrated AMD Ryzen™ AI, up to 50 TOPS

**Graphics**

Integrated AMD Radeon™ 820M Graphics

**Chipset**

AMD SoC platform

**Memory**

1x 16GB SODIMM DDR5-5600

**Memory Slots**

Two DDR5 SODIMM slots, dual-channel capable

**Max Memory<sup>[1]</sup>**

Up to 64GB DDR5-5600

**Storage**

512GB SSD M.2 2280 PCIe® 4.0x4 NVMe® Opal 2.0

**Max Storage Support<sup>[2]</sup>**

Up to two drives, 2x M.2 SSD • M.2 SSD up to 1TB each

**RAID Preset**

None

**Card Reader**

No card reader

**Optical**

None

**Audio Chip**

High Definition (HD) Audio, Realtek® ALC256 codec

**Speakers**

2Wx1

**Power Supply**

90W 89% Adapter

**DESIGN****Keyboard**

USB, Calliope, Black, Italian

**Mouse**

USB Calliope Mouse, Black

**Optional Bay**

None

**Expansion Slots**

Three M.2 slots (one for WLAN, two for SSD)

**Case Color**

Black

**Stand**

None

**Adapter Cage**

None

**Toolless Chassis Screw**

Toolless Chassis Screw

**Mounting**

None

**Pen**

Pen Not Supported

**Form Factor**

Tiny (1L)

**Dimensions (WxDxH)<sup>[3]</sup>**

• Tiny only (without rubber feet) | 179 x 182.9 x 34.5 mm (7.05 x 7.2 x 1.36 inches)

• Tiny only (with rubber feet) | 179 x 182.9 x 36.5 mm (7.05 x 7.2 x 1.44 inches)

**Weight<sup>[4]</sup>**

Around 0.89 kg (1.96 lbs)

**CONNECTIVITY****WLAN + Bluetooth**

Realtek® Wi-Fi® 6 RTL8852BE, 802.11ax 2x2 + BT5.2

**WWAN**

WWAN Not Supported

**Ethernet**

Integrated 100/1000M

**Front Ports**

• 1x USB-C® (USB 10Gbps / USB 3.2 Gen 2), with data transfer and 5V@3A charging

• 1x USB-A (USB 10Gbps / USB 3.2 Gen 2), with Always On and 5V@2.1A charging

• 1x headphone / microphone combo jack (3.5mm)

**Rear Ports**

• 1x USB-A (USB 10Gbps / USB 3.2 Gen 2)

• 3x USB-A (Hi-Speed USB / USB 2.0)

• 1x HDMI® 2.1 TMDS

• 1x DisplayPort™ 1.4a

• 1x Ethernet (GbE RJ-45)

• 1x Power connector

**Optional Rear Ports (configured)**

None

**Monitor Cable**

None

**SECURITY & PRIVACY****Security Chip**

Discrete TPM 2.0, TCG certified, FIPS 140-2 certified

**Fingerprint Reader**

No fingerprint reader

**Physical Locks**

Kensington Security Slot™, 3 x 7 mm

**Chassis Intrusion Switch**

Chassis Intrusion Switch

**MANAGEABILITY****System Management**

Non-vPro®

**SERVICE****Base Warranty**

1-year, Courier or Carry-in

**Included Upgrade**

1Y Onsite from 1Y Depot WHB (CPN)

**CERTIFICATIONS****Green Certifications**

• ENERGY STAR® 9.0

• EPEAT™ Gold Registered

• ErP Lot 3/7

• GREENGUARD®

• RoHS / WEEE / REACH

**SOFTWARE****Operating System**

Windows® 11 Pro, WE (EN/FR/DE/NL/IT)

**Bundled Software**

None

**ACCESSORIES****Bundled Accessories**

None

**MODEL****TopSeller** : Yes**EAN / UPC / JAN:** 0199272682677**Announce Date:** 2025-10-16**End of Support** : 2032-05-14**Note:**<sup>[1]</sup> The max memory is based on the test results with current Lenovo memory offerings.<sup>[2]</sup> The max capacity of each disk type is based on the test results with current Lenovo storage offerings.<sup>[3]</sup> The system dimensions may vary depending on configurations.<sup>[4]</sup> The system weight is approximate and based on results in Lenovo lab, which varies depending on the source of component, variance of the distribution of each component, and manufacturing process. It may not be the exact weight for each specific model.

- Please refer to the official [Lenovo store website](#) or contact a local Lenovo sales representative or authorized business partner for current inventory and purchase options.
- Lenovo reserves the right to change specifications without notice.