



The product images are for illustration purposes only. Actual product appearance, ports, keyboard layout, and accessories may vary by model.

- AMD Ryzen 9 8940HX (16C / 32T, 2.4 / 5.3GHz, 16MB L2 / 64MB L3)
- 2x 16GB SODIMM DDR5-5200
- 1TB SSD M.2 2242 PCIe 4.0x4 NVMe
- NVIDIA GeForce RTX 5060 8GB GDDR7, Boost Clock 2497MHz, TGP 115W, 572 AI TOPS
- Windows 11 Pro, WE (EN/FR/DE/NL/IT)
- Case color - Luna Grey
- 1Y Premier WHB (CPN)

Premier Support - A direct 24x7x365 line to our most elite technicians.

- Advanced technical support, 24x7x365, in more than 100 markets
- Comprehensive hardware & OEM software support
- Single point of contact for simplified end-to-end case management
- Technical Account Managers for proactive relationship and escalation management
- Priority on service delivery and repair parts
- Lenovo Service Connect Portal for customized reporting and product support

Accidental Damage Protection - Protection of your PC from the unexpected.

Experience shows that a significant portion of devices may be damaged (and not covered under warranty) in the first three years. Lenovo's Accidental Damage Protection service covers accidents beyond the system warranty such as drops, spills, bumps and even electrical surges. Make sure your new device has maximum protection, avoid unplanned costs and get peace of mind.

Base Warranty - Included with the systems you purchase, default 1- or 3-year coverage window.

Warranty Extensions & Upgrades - Service and protection that's right for your circumstances.

- Pick Up & Return Courier
- Onsite Support
- Technician Installed Customer
- Replaceable Unit Service
- International Warranty Upgrade

Recommended Accessories Italy



Lenovo Wired VoIP Headset 5000 (Teams)

4XD1R88995



Lenovo Wireless Multi-Mode Pro Combo Keyboard and Mouse 6000-Italy

4X31S04830



ThinkPad Essential 16-inch Backpack (Eco)

4X41C12468



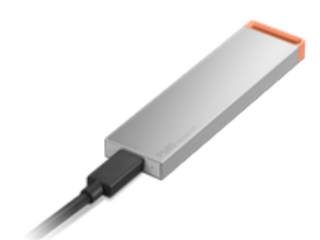
Lenovo 240W USB-C Retractable Cable

GX91V57059



Lenovo 16" Clarity Privacy Filter

4XJ1U03940



Lenovo PS8S Portable SSD 4TB

4XB1T91892

>> [View More Accessories](#)

PERFORMANCE**Processor**

AMD Ryzen™ 9 8940HX (16C / 32T, 2.4 / 5.3GHz, 16MB L2 / 64MB L3)

Graphics

NVIDIA GeForce RTX™ 5060 8GB GDDR7, Boost Clock 2497MHz, TGP 115W, 572 AI TOPS

Chipset

AMD SoC Platform

Memory

2x 16GB SODIMM DDR5-5200

Memory Slots

Two DDR5 SODIMM slots, dual-channel capable

Max Memory^[1]

Up to 64GB DDR5-5200

Storage

1TB SSD M.2 2242 PCIe® 4.0x4 NVMe®

Storage Slot

Two M.2 2280 PCIe® 4.0 x4 slots

Max Storage Support^[2]

Up to two drives, 2x M.2 SSD • M.2 2280 SSD up to 2TB each

Card Reader

SD Card Reader

Audio Chip

High Definition (HD) Audio, Realtek® ALC3287 codec

Speakers

Stereo speakers, 2W x2

Microphone

2x, Array

Camera

HD 720p with Privacy Shutter

Battery

85Wh

Power Adapter

300W Slim Tip (3-pin)

Special Features

Modern Standby

DESIGN**Display**16" WQXGA (2560x1600) IPS 500nits Anti-glare, 100% DCI-P3, 240Hz, DisplayHDR™ 400, G-SYNC®, Eyesafe®, X-Rite®^[3]**Touchscreen**

None

Screen-to-Body Ratio

93%

Color Calibration

X-Rite® Factory Color Calibration

Pen

Pen Not Supported

Keyboard

Backlit, Italian

Touchpad

Buttonless glass surface multi-touch touchpad, supports Precision TouchPad (PTP), 80 x 135 mm (3.15 x 5.31 inches)

Dimensions (WxDxH)^[4]

354.6 x 256.2 x 19.3 mm (13.96 x 10.09 x 0.76 inches)

Weight^[5]

Less than 2.15 kg (4.74 lbs)

Case Color

Luna Grey

Case Material

Aluminium (Top), Aluminium (Bottom)

Surface Treatment

Anodizing Sandblasting

SOFTWARE**Operating System**

Windows® 11 Pro, WE (EN/FR/DE/NL/IT)

Bundled Software

Office Trial + Lenovo® AI Now

CONNECTIVITY**WLAN + Bluetooth**

Wi-Fi® 7, 802.11be 2x2 + BT5.4

WWAN

WWAN Not Supported

Ethernet

No Onboard Ethernet

Standard Ports

- 2x USB-A (USB 5Gbps / USB 3.2 Gen 1)
- 1x USB-A (USB 10Gbps / USB 3.2 Gen 2), Always On
- 2x USB-C® (USB 10Gbps / USB 3.2 Gen 2), with USB PD 95-100W and DisplayPort™ 2.1
- 1x HDMI® 2.1, up to 8K/60Hz
- 1x Headphone / microphone combo jack (3.5mm)
- 1x SD card reader
- 1x Slim tip power connector
- 1x Magic Bay (pogo pin connector)

DockingVarious docking solutions supported via USB-C®. For more compatible docking solutions, please visit [Docking for ThinkBook® 16p G6 ADR](#)**SECURITY & PRIVACY****Security Chip**

Firmware TPM 2.0 Enabled

Physical Locks

Kensington Nano Security Slot™, 2.5 x 6 mm

Fingerprint Reader

No Fingerprint Reader

Other Security

Camera privacy shutter

SERVICE**Base Warranty**

1-year, Courier or Carry-in

Included Upgrade

1Y Premier WHB (CPN)

ACCESSORIES**Bundled Accessories**

None

CERTIFICATIONS**Green Certifications**

- ENERGY STAR® 9.0
- EPEAT™ Gold Registered^[6]
- ErP Lot 3
- RoHS compliant

Mil-Spec Test

MIL-STD-810H military test passed

Other Certifications

- Eyesafe® Certified 2.0
- Pantone® SkinTone™ Validated
- Pantone® Validated
- TÜV Rheinland® Low Blue Light (Hardware Solution)

MODEL**TopSeller** : Yes **EAN / UPC / JAN:** 199276422064**Announce Date:** 2026-03-24 **End of Support** : 2031-12-21**Note:**^[1] The max memory is based on the test results with current Lenovo memory offerings.^[2] The system supports dual SSD via two M.2 slots, but Lenovo offers only one SSD configuration with a second slot for user self-expansion. The max storage capacity is only technical readiness and may be different from current Lenovo storage offerings.^[3] IPS (in-plane switching) technology may refer to IPS, PLS, ADS, AHVA, AAS.^[4] The system dimensions may vary depending on configurations.^[5] The system weight is approximate and based on results in Lenovo lab, which varies depending on the source of component, variance of the distribution of each component, and manufacturing process. It may not be the exact weight for each specific model.^[6] EPEAT is registered where applicable, please visit epeat.net for registration status by country.

- Please refer to the official [Lenovo store website](#) or contact a local Lenovo sales representative or authorized business partner for current inventory and purchase options.
- Lenovo reserves the right to change specifications without notice.