



The product images are for illustration purposes only. Actual product appearance, ports, keyboard layout, and accessories may vary by model.

- Intel Core Ultra 7 258V, 8C (4P + 4LPE) / 8T, Max Turbo up to 4.8GHz, 12MB Intel Smart Cache
- 32GB Soldered LPDDR5X-8533, MoP Memory
- 1TB SSD M.2 2242 PCIe 4.0x4 NVMe Opal 2.0
- Integrated Intel Arc Graphics 140V
- Windows 11 Pro, WE (EN/FR/DE/NL/IT)
- Case color - Black
- 1Y Premier WHB (CPN)

Premier Support - A direct 24x7x365 line to our most elite technicians.

- Advanced technical support, 24x7x365, in more than 100 markets
- Comprehensive hardware & OEM software support
- Single point of contact for simplified end-to-end case management
- Technical Account Managers for proactive relationship and escalation management
- Priority on service delivery and repair parts
- Lenovo Service Connect Portal for customized reporting and product support

Accidental Damage Protection - Protection of your PC from the unexpected.

Experience shows that a significant portion of devices may be damaged (and not covered under warranty) in the first three years. Lenovo's Accidental Damage Protection service covers accidents beyond the system warranty such as drops, spills, bumps and even electrical surges. Make sure your new device has maximum protection, avoid unplanned costs and get peace of mind.

Base Warranty - Included with the systems you purchase, default 1- or 3-year coverage window.

Warranty Extensions & Upgrades - Service and protection that's right for your circumstances.

- Pick Up & Return Courier
- Onsite Support
- Technician Installed Customer
- Replaceable Unit Service
- International Warranty Upgrade

Recommended Accessories Italy



Lenovo Essential Wireless Combo Keyboard & Mouse Gen2 Black-Italy
4X31R64473



Lenovo 16-inch Laptop Backpack B210 Black(ECO)
4X40T84059



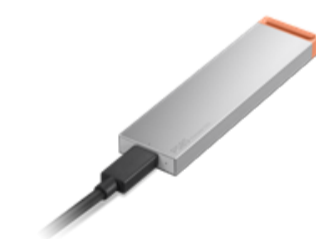
ThinkPad Dual-Mode Wireless ANC Foldable Headset 8550 (Aura Edition) - USB-A,...
4XD1V23301



Lenovo USB 20Gbps USB-C to USB-C Cable 1.5m
4X91U92143



Lenovo 16" Clarity Privacy Filter
4XJ1U03940



Lenovo PS8S Portable SSD 4TB
4XB1T91892

>> [View More Accessories](#)

PERFORMANCE**Processor**

Intel Core™ Ultra 7 258V, 8C (4P + 4LPE) / 8T, Max Turbo up to 4.8GHz, 12MB Intel® Smart Cache

AI PC Category

Copilot+ PC^[1]

NPU

Integrated Intel® AI Boost, up to 47 TOPS

Graphics

Integrated Intel® Arc™ Graphics 140V

Chipset

Intel® SoC Platform

Memory

32GB Soldered LPDDR5X-8533, MoP Memory

Memory Slots

Lunar Lake: memory soldered to systemboard, no slots, dual-channel

Max Memory

Lunar Lake: 32GB soldered memory, not upgradable

Storage

1TB SSD M.2 2242 PCIe® 4.0x4 NVMe® Opal 2.0

Storage Slot

Lunar Lake: one M.2 2280 PCIe® 4.0 x4 slot

Max Storage Support

Lunar Lake: one drive, up to 1TB M.2 2280 SSD

Card Reader

No card reader

Audio Chip

High Definition (HD) Audio, Senary SN6147 codec

Speakers

Stereo speakers, 2W x2, Dolby Atmos®, audio by HARMAN

Microphone

2x, Array

Camera

FHD 1080p + IR Hybrid with Privacy Shutter

Battery

64Wh

Power Adapter

65W USB-C® (3-pin)

DESIGN**Display**

16" WUXGA (1920x1200) IPS 300nits Anti-glare, 45% NTSC, 60Hz^[2]

Touchscreen

None

Screen-to-Body Ratio

90.7%

Pen

Pen Not Supported

Keyboard

Backlit, Italian

Dimensions (WxDxH)^[3]

356 x 249 x 10.1/17.05 (front/rear), 21.15 (maximum) mm; 14.01 x 9.80 x 0.40/0.67 (front/rear), 0.83 (maximum) inches

Weight^[4]

Starting at 1.61 kg (3.55 lbs)

Case Color

Black

Case Material

Aluminium (Top), Aluminium (Bottom)

SOFTWARE**Operating System**

Windows® 11 Pro, WE (EN/FR/DE/NL/IT)

Bundled Software

Lenovo® AI Now

CONNECTIVITY**WLAN + Bluetooth**

Intel® Wi-Fi® 6E AX211, 802.11ax 2x2 + BT5.3

WWAN

WWAN Not Supported

SIM Card

No physical SIM card inbox

Ethernet

100/1000M (RJ-45)

NFC

No NFC

Standard Ports

- 1x USB-A (USB 5Gbps / USB 3.2 Gen 1)
- 1x USB-A (USB 10Gbps / USB 3.2 Gen 2), Always On
- 1x USB-C® (Thunderbolt™ 4 / USB4® 40Gbps), with USB PD 45-65W and DisplayPort™ 2.1
- 1x HDMI® 2.1, up to 4K/60Hz
- 1x Headphone / microphone combo jack (3.5mm)
- 1x Ethernet (RJ-45)

Optional Ports (configured)

1x USB-C® (Thunderbolt™ 4 / USB4® 40Gbps), with USB PD 45-65W and DisplayPort™ 2.1

Docking

Various docking solutions supported via Thunderbolt™ / USB-C®. For more compatible docking solutions, please visit [Docking for ThinkPad® E16 Gen 3 \(Intel®\)](#)

SECURITY & PRIVACY**ThinkShield**

ThinkShield is a comprehensive security solution that encompasses hardware, software, and supply chain components. For more details, visit [here](#)

Security Chip

Discrete TPM 2.0 Enabled

Physical Locks

Kensington Nano Security Slot™, 2.5 x 6 mm

Smart Card Reader

No Smart Card Reader

Fingerprint Reader

Touch Style, Match-on-Chip, Integrated in Power Button

Other Security

- Camera privacy shutter
- IR camera for Windows® Hello (facial recognition)

MANAGEABILITY**System Management**

Non-vPro®

SERVICE**Base Warranty**

1-year, Courier or Carry-in

Included Upgrade

1Y Premier WHB (CPN)

ACCESSORIES**Bundled Accessories**

None

CERTIFICATIONS**Green Certifications**

- ENERGY STAR® 9.0
- EPEAT™ Gold Registered^[5]
- ErP Lot 6/26
- RoHS compliant
- TCO Certified, generation 10

Mil-Spec Test

MIL-STD-810H military test passed

Other Certifications

TÜV Rheinland® Low Blue Light (Software Solution)

MODEL

TopSeller : Yes **EAN / UPC / JAN**: 0199274014537
Announce Date: 2026-01-27 **End of Support** : 2032-08-20

Note:

[1] Copilot+ PCs have at least 16GB RAM, 256GB storage, and a NPU that runs 40+ TOPs to run the latest AI tools build-in latest Windows 11 to accelerate productivity and creativity.

- Please refer to the official [Lenovo store website](#) or contact a local Lenovo sales representative or authorized business partner for current inventory and purchase options.
- Lenovo reserves the right to change specifications without notice.
- To view full note details, please visit the [web page](#).