



- Intel Xeon w3-2525 ,8C (8P + 0E) / 16T, 3.5 / 4.5GHz, 22.5MB
- 2x 16GB RDIMM DDR5-4800 ECC
- 1x 1TB SSD M.2 2280 PCIe 4.0x4 Performance NVMe Opal
- Windows 11 Pro for Workstations, WE (EN/FR/DE/NL/IT)
- 3Y Premier TS WHB (CPN)

The product images are for illustration purposes only. Actual product appearance, ports, keyboard layout, and accessories may vary by model.

**Premier Support** - A direct 24x7x365 line to our most elite technicians.

- |   |   |
|---|---|
| Advanced technical support, 24x7x365, in more than 100 markets    | Technical Account Managers for proactive relationship and escalation management |
| Comprehensive hardware & OEM software support                     | Priority on service delivery and repair parts                                   |
| Single point of contact for simplified end-to-end case management | Lenovo Service Connect Portal for customized reporting and product support      |

**Accidental Damage Protection** - Protection of your PC from the unexpected.

Experience shows that a significant portion of devices may be damaged (and not covered under warranty) in the first three years. Lenovo's Accidental Damage Protection service covers accidents beyond the system warranty such as drops, spills, bumps and even electrical surges. Make sure your new device has maximum protection, avoid unplanned costs and get peace of mind.

**Base Warranty** - Included with the systems you purchase, default 1- or 3-year coverage window.

**Warranty Extensions & Upgrades** - Service and protection that's right for your circumstances.

- |                            |                                  |
|----------------------------|----------------------------------|
| • Pick Up & Return Courier | • Technician Installed Customer  |
| • Onsite Support           | • Replaceable Unit Service       |
|                            | • International Warranty Upgrade |

**Recommended Accessories** Italy



Lenovo Wired VoIP Headset (Teams)

4XD1M45626



ThinkPad Bluetooth Presenter Mouse (Aura Edition)

4Y51T62792



Lenovo USB 20Gbps USB-C to USB-C Cable 1.5m

4X91U92143



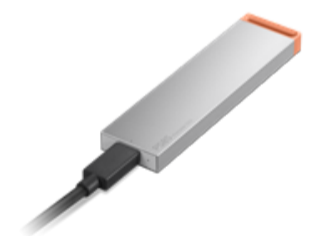
Intel E810-DA2 10/25GbE SFP28 2-Port PCIe Ethernet Adapter

4XC1U87489



NVIDIA RTX PRO 4500 Blackwell 32GB DP\*4 GDDR7 Graphics Card

4X61T95637



Lenovo PS8S Portable SSD 4TB

4XB1T91892

>> [View More Accessories](#)

**PERFORMANCE****Processor**

Intel Xeon® w3-2525 ,8C (8P + 0E) / 16T, 3.5 / 4.5GHz, 22.5MB

**AI PC Category<sup>[1]</sup>**

AI-Ready Workstations

**Processor Sockets**

1x FCLGA4677

**Discrete Graphics**

None

**Chipset**

Intel® W790 Chipset

**Memory<sup>[2]</sup>**

2x 16GB RDIMM DDR5-4800 ECC

**Memory Slots**

8 DDR5 DIMM slots, 4 channels capable

**Max Memory<sup>[3]</sup>**

Up to 512GB (8x 64GB RDIMM)

**PCIe NVMe Controller**

Integrated NVMe® Controller, non-RAID

**PCIe NVMe Drive**

1x 1TB SSD M.2 2280 PCIe® 4.0x4 Performance NVMe® Opal

**SATA Controller**

Onboard Intel® RSTe SATA

**SATA/SAS Drive**

None

**Audio Chip**

High Definition (HD) Audio, Realtek® ALC897-Q codec

**Power Supply**

1000W Platinum Fixed

**DESIGN****Keyboard**

USB, Calliope, Black, Italian

**Mouse**

USB Calliope Mouse, Black

**Dimensions (WxDxH)<sup>[4]</sup>**

165 x 453.9 x 440 mm (6.5 x 17.9 x 17.3 inches, with feet)

**Weight<sup>[5]</sup>**

19 kg (41.9 lbs, maximum configuration)

**CONNECTIVITY****Onboard Ethernet**

Intel® I219-LM, 1x GbE RJ-45

**Optional Ethernet**

None

**WLAN + Bluetooth**

None

**Card Reader**

15-in-1 Card Reader

**Front Ports**

1x headphone / microphone combo jack (3.5mm)

**Optional Front Ports (configured)**

- 2x USB-C® 3.2 Gen 2
- 2x USB 3.2 Gen 2

**Rear Ports**

- 1x USB-C® (USB 20Gbps / USB 3.2 Gen 2x2), data transfer only
- 2x USB-A (Hi-Speed USB / USB 2.0)
- 3x USB-A (USB 10Gbps / USB 3.2 Gen 2)
- 1x Ethernet (GbE RJ-45)
- 1x line-in (3.5mm)
- 1x line-out (3.5mm)

**Optional Rear Ports (configured)**

None

**SECURITY & PRIVACY****Security Chip**

Discrete TPM 2.0, TCG certified, FIPS 140-2 certified

**Physical Locks**

Kensington Security Slot™, 3 x 7 mm

**Cover Lock**

None

**Chassis Intrusion Switch**

Chassis Intrusion Switch

**MANAGEABILITY****System Management<sup>[6]</sup>**

Intel® vPro® Enterprise with Intel® AMT 16

**Diagnostic**

Front Diagnostic Panel with QR code

**SERVICE****Base Warranty**

3-year, Onsite

**Included Upgrade**

3Y Premier TS WHB (CPN)

**CERTIFICATIONS****ISV Certifications**

Please visit [ISV certifications for Lenovo® Workstations](#)

**SOFTWARE****Operating System**

Windows® 11 Pro for Workstations, WE (EN/FR/DE/NL/IT)

**Bundled Software**

None

**MODEL**

TopSeller : Yes EAN / UPC / JAN: 0199274241568

Announce Date: 2026-02-12 End of Support : 2031-05-03



Product image is a sample, it may not match the real color of this model

**Note:**

[1] With scalable configurations of higher-performance CPUs and professional NVIDIA RTX GPUs, in addition to advantage of the same modern AI PC technology, AI-Ready workstation power the demanding AI consumption & development workflows.

[2] System comes with DDR5-4800 memory and some configurations will run at 4400 MT/s due to the memory support capability of processor.

[3] The max memory is based on the test results with current Lenovo memory offerings.

[4] The system dimensions may vary depending on configurations.

[5] The system weight is approximate and based on results in Lenovo lab, which varies depending on the source of component, variance of the distribution of each component, and manufacturing process. It may not be the exact weight for each specific model.

[6] Intel vPro offers a superset of DASH's defined capabilities.

- Please refer to the official [Lenovo store website](#) or contact a local Lenovo sales representative or authorized business partner for current inventory and purchase options.
- Lenovo reserves the right to change specifications without notice.