

PERFORMANCE

Processor

Built into NVIDIA® GB10 Grace Blackwell Superchip, 20 core Arm, 10x Cortex-X925 + 10x Cortex-A725

Integrated Graphics

NVIDIA® Blackwell Architecture, Built into NVIDIA® GB10 Grace Blackwell Superchip

Chipset

NVIDIA® GB10 Grace Blackwell Superchip

Memory

128GB LPDDR5x, 256-bit, Unified System Memory

PCIe NVMe Drive

1TB SSD M.2 2242 PCIe® 4.0x4 NVMe® Opal 2.0

Audio Chip

HDMI® multichannel audio output

Power Supply

240W Adapter

DESIGN

Dimensions (WxDxH)

150 x 150 x 50.5 mm (5.91 x 5.91 x 1.99 inches)

Weight

1.2 kg (2.65 lbs)

CONNECTIVITY

Onboard Ethernet

ConnectX-7 Smart NIC, 1x 10GbE RJ-45

WLAN + Bluetooth

Wi-Fi® 7, 802.11be + BT5.3

Rear Ports

- 1x USB-C® (USB 20Gbps / USB4®), with USB PD 3.1 in and DisplayPort™ 2.1
- 3x USB-C® (USB4® 20Gbps), with DisplayPort™ 2.1
- 1x HDMI®
- 1x Ethernet (10GbE RJ-45)
- 2x QSFP (200Gbps each, for connecting two ThinkStation® PGX units)

SERVICE

Base Warranty

1-year, Onsite

Included Upgrade

None

SOFTWARE

Operating System

NVIDIA® DGX OS

MODEL

TopSeller : Yes

EAN / UPC / JAN: 0199272301523

Announce Date: 2025-09-30

End of Support : 2030-09-29



- Product image is a sample, it may not match the real color of this model
- Please refer to the official [Lenovo store website](#) or contact a local Lenovo sales representative or authorized business partner for current inventory and purchase options.
 - Lenovo reserves the right to change specifications without notice.

Premier Support - A direct 24x7x365 line to our most elite technicians.



Advanced technical support, 24x7x365, in more than 100 markets



Technical Account Managers for proactive relationship and escalation management



Comprehensive hardware & OEM software support



Priority on service delivery and repair parts



Single point of contact for simplified end-to-end case management



Lenovo Service Connect Portal for customized reporting and product support

Accidental Damage Protection - Protection of your PC from the unexpected.

Experience shows that a significant portion of devices may be damaged (and not covered under warranty) in the first three years. Lenovo's Accidental Damage Protection service covers accidents beyond the system warranty such as drops, spills, bumps and even electrical surges. Make sure your new device has maximum protection, avoid unplanned costs and get peace of mind.

Base Warranty - Included with the systems you purchase, default 1- or 3-year coverage window.

Warranty Extensions & Upgrades - Service and protection that's right for your circumstances.

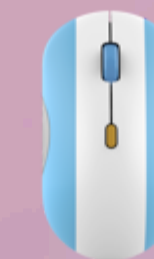
- Pick Up & Return Courier
- Onsite Support
- Technician Installed Customer
- Replaceable Unit Service
- International Warranty Upgrade

Lenovo may not offer the products, services or features discussed in this document in all regions. Lenovo may withdraw an offering at any time. Information is subject to change without notice. Consult your local representative for information on offerings available in your area. Lenovo reserves the right to change specifications or other product information without notice. Lenovo is not responsible for photographic or typographical errors. Lenovo provides this publication "as is" without warranty of any kind, either express or implied, including the implied warranties of merchantability or fitness for a particular purpose.

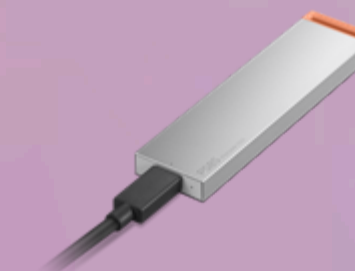
Recommended Accessories



ThinkStation PGX QSFP Link Cable
4X91U42988



Lenovo 350 Bluetooth Silent Mouse (Fan Edition - Argentina) GY51U71763



Lenovo PS8S Portable SSD 4TB 4XB1T91892

Please click [here](#) to view the full list of accessories.

Lenovo

PSREF
Product Specifications
Reference