



The product images are for illustration purposes only. Actual product appearance, ports, keyboard layout, and accessories may vary by model.

- Intel Core 7 240H, 10C (6P + 4E) / 16T, P-core 2.5 / 5.2GHz, E-core 1.8 / 4.0GHz, 24MB Intel Smart Cache
- 1x 16GB SODIMM DDR5-5200
- 512GB SSD M.2 2242 PCIe 4.0x4 NVMe
- Integrated Intel Graphics
- Windows 11 Home, WE (EN/FR/DE/NL/IT)
- Case color - Business Black
- 2Y Depot from 1Y Depot Windchill bundles (CPN)

**Premium Care - Advanced Support from Real People. Real Fast.**



**REAL PERSON**

Choose how you want to reach us - through the phone, chat or email - our expert technicians will take care of you.



**REAL FAST**

Highly trained technicians will provide you real-time solutions, whatever the issue, on your first contact. If needed, our team will schedule an onsite visit for the next business day.



**HASSLE FREE**

'Getting started' and 'how-to' assistance for hardware and software. Easy solutions that are simple to reach - that's how Premium Care delivers you the ideal support experience.



**PC HEALTH CHECK**

Free annual PC Health Check that allows our experts to spot issues before you do so they can resolve them quickly and help you avoid PC problems.

**Accidental Damage Protection - Protection of your PC from the unexpected.**

Experience shows that a significant portion of devices may be damaged (and not covered under warranty) in the first three years. Lenovo's Accidental Damage Protection service covers accidents beyond the system warranty such as drops, spills, bumps and even electrical surges. Make sure your new device has maximum protection, avoid unplanned costs and get peace of mind.

**Base Warranty** - Included with the systems you purchase, default 1- or 3-year coverage window.

**Warranty Extensions & Upgrades** - Service and protection that's right for your circumstances.

- Pick Up & Return Courier
- Onsite Support
- Technician Installed Customer
- Replaceable Unit Service
- International Warranty Upgrade

**Recommended Accessories** Italy



Lenovo Wired VoIP Headset 5000 (Teams)

4XD1R88995



Lenovo Essential Wireless Combo Keyboard & Mouse Gen2 Black-Italy

4X31R64473



Lenovo 16-inch Laptop Backpack B210 Black(ECO)

4X40T84059



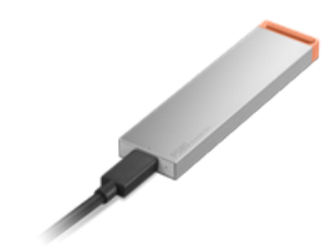
Lenovo 65W Mini USB-C GaN Charger

GOA665WBEU



Lenovo USB 20Gbps USB-C to USB-C Cable 1.5m

4X91U92143



Lenovo PS8S Portable SSD 4TB

4XB1T91892

>> [View More Accessories](#)

**PERFORMANCE****Processor**

Intel Core™ 7 240H, 10C (6P + 4E) / 16T, P-core 2.5 / 5.2GHz, E-core 1.8 / 4.0GHz, 24MB Intel® Smart Cache

**Graphics**

Integrated Intel® Graphics

**Chipset**

Intel® SoC Platform

**Memory**

1x 16GB SODIMM DDR5-5200

**Memory Slots**

Two DDR5 SODIMM slots, dual-channel capable

**Max Memory<sup>[1]</sup>**

Up to 32GB DDR5-5200 offering

**Storage**

512GB SSD M.2 2242 PCIe® 4.0x4 NVMe®

**Storage Slot**

One M.2 2242 PCIe® 4.0 x4 slot

**Max Storage Support<sup>[2]</sup>**

One drive, up to 1TB M.2 2242 SSD

**Optical**

None

**Card Reader**

No Card Reader

**Audio Chip**

High Definition (HD) Audio, Senary SN6147 codec

**Speakers**

Stereo speakers, 1.5W x2

**Microphone**

2x, Array

**Camera**

HD 720p with Privacy Shutter

**Battery**

47Wh

**Power Adapter**

65W USB-C® (3-pin)

**Special Features**

Modern Standby

**DESIGN****Display**

15.6" FHD (1920x1080) TN 250nits Anti-glare, 45% NTSC

**Touchscreen**

None

**Screen-to-Body Ratio**

87%

**Pen**

Pen Not Supported

**Keyboard**

Non-backlit, Italian

**Touchpad**

Buttonless Mylar® surface multi-touch touchpad, supports Precision TouchPad (PTP), 62 x 104 mm (2.44 x 4.09 inches)

**Dimensions (WxDxH)<sup>[3]</sup>**

359.2 x 235.8 x 18.3 mm (14.14 x 9.28 x 0.72 inches)

**Weight<sup>[4]</sup>**

Starting at 1.61 kg (3.55 lbs)

**Case Color**

Business Black

**Case Material**

PC-ABS (Top), PC-ABS (Bottom)

**Surface Treatment**

Texture

**SOFTWARE****Operating System**

Windows® 11 Home, WE (EN/FR/DE/NL/IT)

**Bundled Software**

Office Trial

**CONNECTIVITY****WLAN + Bluetooth**

Wi-Fi® 6, 802.11ax 2x2 + BT5.2

**WWAN**

WWAN Not Supported

**Ethernet**

100/1000M (RJ-45)

**Standard Ports**

- 2x USB-A (USB 5Gbps / USB 3.2 Gen 1)
- 1x USB-C® (USB 5Gbps / USB 3.2 Gen 1), with USB PD 45-65W and DisplayPort™ 1.2
- 1x HDMI® 1.4b
- 1x Headphone / microphone combo jack (3.5mm)
- 1x Ethernet (RJ-45)
- 1x Round tip power connector

**Docking**

Various docking solutions supported via USB-C®. For more compatible docking solutions, please visit [Docking for Lenovo® V15 G5 IRL](#)

**SECURITY & PRIVACY****Security Chip**

Discrete TPM 2.0 Enabled

**Physical Locks**

Kensington Nano Security Slot™, 2.5 x 6 mm

**Fingerprint Reader**

No Fingerprint Reader

**Other Security**

Camera privacy shutter

**SERVICE****Base Warranty**

1-year, Courier or Carry-in

**Included Upgrade**

2Y Depot from 1Y Depot Windchill bundles (CPN)

**ACCESSORIES****Bundled Accessories**

None

**CERTIFICATIONS****Green Certifications**

- ENERGY STAR® 9.0
- EPEAT™ Gold Registered<sup>[5]</sup>
- ErP Lot 6/26
- RoHS compliant
- TCO Certified, generation 9

**Mil-Spec Test**

MIL-STD-810H military test passed

**Other Certifications**

TÜV Rheinland® Low Blue Light (Software Solution)

**MODEL**

**TopSeller** : Yes **EAN / UPC / JAN:** 199276040640

**Announce Date:** 2026-03-10 **End of Support** : 2030-12-10

**Note:**

[1] The max memory is based on the test results with current Lenovo memory offerings.

[2] The storage capacity supported is based on the test results with current Lenovo storage offerings.

[3] The system dimensions may vary depending on configurations.

[4] The system weight is approximate and based on results in Lenovo lab, which varies depending on the source of component, variance of the distribution of each component, and manufacturing process. It may not be the exact weight for each specific model.

[5] EPEAT is registered where applicable, please visit [epeat.net](https://www.epeat.net) for registration status by country.

- Please refer to the official [Lenovo store website](#) or contact a local Lenovo sales representative or authorized business partner for current inventory and purchase options.
- Lenovo reserves the right to change specifications without notice.