



The product images are for illustration purposes only. Actual product appearance, ports, keyboard layout, and accessories may vary by model.

- MediaTek Kompanio 540 (8C, 2x A78 @2.6GHz + 6x A55 @2.0GHz)
- 4GB Soldered LPDDR5X-6400
- 64GB UFS 2.2
- Integrated Arm Mali-G57 MC2 GPU
- ChromeOS
- Case color - Luna Grey
- 1-year, Courier or Carry-in

Premium Care - Advanced Support from Real People. Real Fast.



REAL PERSON

Choose how you want to reach us - through the phone, chat or email - our expert technicians will take care of you.



REAL FAST

Highly trained technicians will provide you real-time solutions, whatever the issue, on your first contact. If needed, our team will schedule an onsite visit for the next business day.



HASSLE FREE

'Getting started' and 'how-to' assistance for hardware and software. Easy solutions that are simple to reach - that's how Premium Care delivers you the ideal support experience.



PC HEALTH CHECK

Free annual PC Health Check that allows our experts to spot issues before you do so they can resolve them quickly and help you avoid PC problems.

Accidental Damage Protection - Protection of your PC from the unexpected.

Experience shows that a significant portion of devices may be damaged (and not covered under warranty) in the first three years. Lenovo's Accidental Damage Protection service covers accidents beyond the system warranty such as drops, spills, bumps and even electrical surges. Make sure your new device has maximum protection, avoid unplanned costs and get peace of mind.

Base Warranty - Included with the systems you purchase, default 1- or 3-year coverage window.

Warranty Extensions & Upgrades - Service and protection that's right for your circumstances.

- Pick Up & Return Courier
- Onsite Support
- Technician Installed Customer
- Replaceable Unit Service
- International Warranty Upgrade

Recommended Accessories Italy



Lenovo Wired VoIP Headset 5000 (Teams)

4XD1R88995



Lenovo 16-inch Laptop Backpack B210 Black(ECO)

4X40T84059



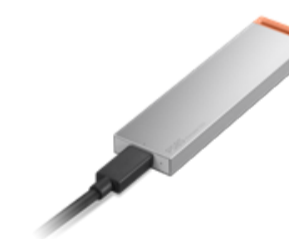
ThinkPad Bluetooth Presenter Mouse (Aura Edition)

4Y51T62792



Lenovo USB 20Gbps USB-C to USB-C Cable 1.5m

4X91U92143



Lenovo PS8S Portable SSD 4TB

4XB1T91892



Lenovo GaN Nano 65W Adapter

GOA6GN65EU

>> [View More Accessories](#)

PERFORMANCE**Processor**

MediaTek Kompanio 540 (8C, 2x A78 @2.6GHz + 6x A55 @2.0GHz)

Graphics

Integrated Arm Mali-G57 MC2 GPU

Chipset

MediaTek SoC Platform

Memory^[1]

4GB Soldered LPDDR5X-6400

Memory Slots

Memory soldered to systemboard, no slots

Max Memory

4GB soldered memory, not upgradable

Storage

64GB UFS 2.2

Storage Slot

UFS on systemboard, no slots

Max Storage Support^[2]

64GB UFS 2.2 on systemboard

Card Reader

No card reader

Audio Chip

High Definition (HD) Audio, ALC5682I-VS-CGT codec

Speakers

Stereo speakers, 2W x2, optimized with Waves MaxxAudio®, Smart Amplifier (AMP)

Microphone

2x, Array

Camera

HD 720p with Privacy Shutter

Battery

50Wh

Power Adapter

65W USB-C® (3-pin)

DESIGN**Display**

11.6" HD (1366x768) IPS 250nits Anti-glare 60Hz, 50% NTSC^[3]

Touchscreen

None

Pen

Pen Not Supported

Keyboard

Non-backlit, Italian

Touchpad

Buttonless Mylar® surface multi-touch touchpad, 60.5 x 104 mm (2.38 x 4.09 inches)

Dimensions (WxDxH)^[4]

288.9 x 210 x 18.5 mm (11.37 x 8.27 x 0.73 inches)

Weight^[5]

Starting at 1.22 kg (2.69 lbs)

Case Color

Luna Grey

Case Material

PC-ABS + 15% Talc+ TPU (Top), PC-ABS + 15% Talc + 50% PCR (Bottom)

Surface Treatment

Texture

SOFTWARE**Operating System**

ChromeOS

Bundled Software

None

CONNECTIVITY**WLAN + Bluetooth**

AMD Wi-Fi® 6E RZ616, 802.11ax 2x2 + BT5.3

WWAN

WWAN Not Supported

SIM Card

No physical SIM card inbox

Ethernet

No Onboard Ethernet

Standard Ports

- 2x USB-A (USB 5Gbps)
- 2x USB-C® (USB 5Gbps), with USB PD 45-65W and DisplayPort™
- 1x HDMI® 1.4b
- 1x Headphone / microphone combo jack (3.5mm)

Docking

Various docking solutions supported via USB-C®. For more compatible docking solutions, please visit [Docking for Lenovo® Chrome 100e G5 M89](#)

SECURITY & PRIVACY**Security Chip**

Google Security Chip H1

Physical Locks

Kensington Nano Security Slot™

Fingerprint Reader

No Fingerprint Reader

Other Security

Camera privacy shutter

SERVICE**Base Warranty**

1-year, Courier or Carry-in

Included Upgrade

None

ACCESSORIES**Bundled Accessories**

None

CERTIFICATIONS**Green Certifications**

- ENERGY STAR® 9.0
- EPEAT™ Gold Registered
- ErP Lot 6/26
- RoHS compliant
- TCO Certified, generation 10

Mil-Spec Test

MIL-STD-810H military test passed

Other Certifications

- ASTM F963 test passed^[6]
- TÜV Rheinland® Low Blue Light (Software Solution)

MODEL

TopSeller : Yes **EAN / UPC / JAN:** 0199273669509

Announce Date: 2026-02-12 **End of Support** : N/A

Note:

[1] Installed memory is actually LPDDR5X-8533 but runs as LPDDR5X-6400 due to platform limitation.

[2] The storage capacity supported is based on the test results with current Lenovo storage offerings.

[3] IPS (in-plane switching) technology may refer to IPS, PLS, ADS, AHVA, AAS.

[4] The system dimensions may vary depending on configurations.

[5] The system weight is approximate and based on results in Lenovo lab, which varies depending on the source of component, variance of the distribution of each component, and manufacturing process. It may not be the exact weight for each specific model.

[6] This certification is only offered on models in specific regions.

- Please refer to the official [Lenovo store website](#) or contact a local Lenovo sales representative or authorized business partner for current inventory and purchase options.
- Lenovo reserves the right to change specifications without notice.