



The product images are for illustration purposes only. Actual product appearance, ports, keyboard layout, and accessories may vary by model.

- Qualcomm Snapdragon SDM680 (8C, 4x A73 @2.4GHz + 4x A53@1.9GHz)
- 8GB Soldered LPDDR4X
- 256GB UFS 2.2
- Integrated Qualcomm Adreno 610 GPU
- Android 14 or Later
- Case color - Luna Grey
- 1-year, Courier

**Premium Care - Advanced Support from Real People. Real Fast.**



**REAL PERSON**

Choose how you want to reach us - through phone, chat, or email - our expert technicians will take care of your device issues.



**REAL FAST**

Highly trained technicians will provide you real-time solutions, whatever the issue, on your first contact. If the issue can't be solved remotely, our team will schedule a repair via depot / carry-in support to resolve your issue.



**HASSLE FREE**

'Getting started' and 'how-to' assistance for hardware and software. Easy solutions that are simple to reach - that's how Premium Care delivers you the ideal support experience.

**Accidental Damage Protection One - Protection for your Tablet from the unexpected.**

Avoid the hassles of unexpected damage & repair costs. With coverage for drops, spills, electric surges, and broken LCD screens, accidental damage protection makes it easy to repair to your Tablets, permitting a single repair during the coverage period.

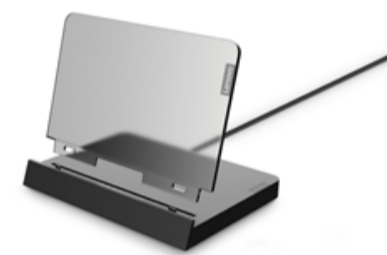
**Base Warranty - Included with the system you purchase with default 1-year coverage window.**

**Lenovo Warranty Extensions & Upgrades (up to 3 years duration) - Gain complete peace of mind by extending your base warranty to up to 3 years and minimize unexpected repair costs.**

- Pick up & return courier / Depot support
- Replaceable unit service\*

\*Applicable in some regions only. Please check with your local services team for more details.

**Recommended Accessories** Italy



Lenovo Smart Charging Station 2

ZG38C07019



Lenovo Folio Case for Tab K11 Plus

ZG38C06525



Lenovo Multi-Device Wireless Keyboard

ZG38C05814



Lenovo 68W USB-C Wall Charger

ZG38C05739



Lenovo Tab Pen Plus

ZG38C05190

>> [View More Accessories](#)

**PERFORMANCE****Processor**

Qualcomm® Snapdragon® SDM680 (8C, 4x A73 @2.4GHz + 4x A53@1.9GHz)

**Graphics**

Integrated Qualcomm® Adreno™ 610 GPU

**Chipset**

Qualcomm® SoC Platform

**Memory**

8GB Soldered LPDDR4X

**Storage**

256GB UFS 2.2

**Card Reader**

microSD Card Slot

**Max Storage Support**

- 256GB UFS 2.2 on systemboard
- microSD card, supports up to 1TB

**Speakers**

4 speakers, optimized with Dolby Atmos®

**Microphone**

2x, Array

**Camera**

Front 8.0MP / Rear 13.0MP with Flashlight

**VoiceCall<sup>[1]</sup>**

No

**Vibration Motor**

Eccentric Rotating Mass (ERM)

**Sensors**

- Accelerometer (G) sensor
- Ambient light sensor (ALS)
- Gyroscope sensor
- Hall sensor
- Proximity (P) sensor

**Battery**

8600mAh (Typical)

**Power Adapter**

10V / 2A (20W)

**DESIGN****Display**

11.45" 2K (2000x1200) TDDI 400nits, 72% NTSC, 90Hz, Touch

**Touchscreen**

10-point Multi-touch

**Pen**

Pen Upgradable (Purchase Separately)<sup>[2]</sup>

**Keyboard**

None

**Dimensions (WxDxH)<sup>[3]</sup>**

268.7 x 168.96 x 7.15 mm (11.58 x 6.65 x 0.28 inches)

**Weight<sup>[4]</sup>**

Around 520 g (1.15 lbs)

**Case Color**

Luna Grey

**Case Material**

Metal

**SOFTWARE****Operating System<sup>[5]</sup>**

Android™ 14 or Later

**CONNECTIVITY****WLAN + Bluetooth**

Wi-Fi® 6, 802.11ax 2x2 + BT5.3

**WWAN**

WWAN Not Supported

**NFC**

NFC

**Location Services**

GPS + GLONASS + Galileo + Beidou

**Standard Ports**

- 1x USB-C® (Hi-Speed USB / USB 2.0), with charging
- 1x Headphone / microphone combo jack (3.5mm)
- 1x Card slot
- 1x Pogo pin connector (4-point)

**SERVICE****Base Warranty<sup>[6]</sup>**

1-year, Courier

**ACCESSORIES****Bundled Accessories**

None

**CERTIFICATIONS****Green Certifications**

- Energy rating F (TB352FU). View details by EPREL registration number [2289697](#).
- ENERGY STAR® 9.0 (only available for TB352FU)
- ErP Lot 6/26
- RoHS compliant

**Dust and Water Resistant**

IP52

**Other Certifications**

- TÜV Rheinland® Flicker Free
- TÜV Rheinland® Low Blue Light (Hardware Solution)

**MODEL**

Product : TB352FU

EAN / UPC / JAN: 197530354830

TopSeller : Yes

Announce Date: 2024-05-14



Product image is a sample, it may not match the real color of this model

**Note:**

[1] Use of Voice call requires cellular data plan. Voice call functionality details may vary based on local operator network, data and messaging services. Please contact your carriers for details.

[2] For details upon pen compatibility, please check [Here](#). Pen availability may vary by country / region.

[3] The system dimensions may vary depending on configurations.

[4] The system weight is approximate and based on results in Lenovo lab, which varies depending on the source of component, variance of the distribution of each component, and manufacturing process. It may not be the exact weight for each specific model.

[5] For latest operating system and security patches deliver plan, please visit <https://support.lenovo.com/solutions/ht501098>.

[6] For warranty upgrade service, please go to <https://smartfind.lenovo.com/services>. To learn more details of warranty policy, please access <https://support.lenovo.com/warrantylookup/warrantypolicy>.

- Please refer to the official [Lenovo store website](#) or contact a local Lenovo sales representative or authorized business partner for current inventory and purchase options.
- Lenovo reserves the right to change specifications without notice.